

PARTICULARS

Year Built : 2009
Class : ABS + A1, HSC Crewboat + AMS
Type : Crew/Utility Vessel
Flag : Malaysia

DIMENSION

Length Overall : 40.38 m
Breadth Moulded : 7.80 m
Depth Moulded : 3.40 m
Draft Moulded : 1.30 m
GRT : 270 MT
NRT : 81 MT

PERFORMANCE

Speed : 24.0 knots (max)
: 18.0 knots (economical)

CARGO CAPACITIES

Deck Cargo : 40 MT
Deck Strength : 2.0 MT/m²
Clear Deck Area : 100 m²
Fuel Oil : 100 m³
Fresh Water : 19 m³

PROPULSION SYSTEM

Main Engine : 3 x 1,400 BHP @ 2300 RPM
Caterpillar C32
Main Generator : 2 x 90 kW Powerdrive AC Marine
Bow Thruster : 1 x 60 HP Petter's S60-80
Propellers : FPP

NAVIGATIONAL/COMMUNICATION

GMDSS : Furuno RC1800T GMDSS A3
VHF Radio : 1 x Furuno Radiotelephone FM-8800S
SSB Radio : 1 x Furuno Radiotelephone FS-1570
Radars : 1 x Furuno Marine Radar 1932 MK2, 48 nm
: 1 x Furuno Marine Radar FR-1505 MK3, 96 nm
GPS : 1 x Furuno Navigator GP-150
SART : 2 x McMurdo S4
Inmarsat : 1 x Nera WorldPhone Inmarsat Mini-M
EPIRB : 1 x McMurdo E3A
Navtex Receiver : 1 x Furuno Receiver NX-700
Echo Sounder : 1 x Furuno FE-700
Gyrocompass : 1 x Anschuetz Standard 22 Compact
Autopilot : 1 x Ratheon Nauto Pilot NP 60
Wind Indicator : 1 x Navman Wind 3150
PA System : 1 x Vingtor Marine ETB
AIS : 1 x Furuno FA-150

ELECTRICAL (DECK OUTLET)

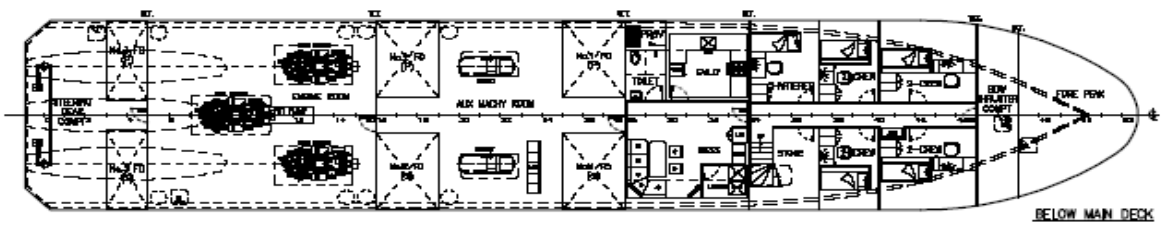
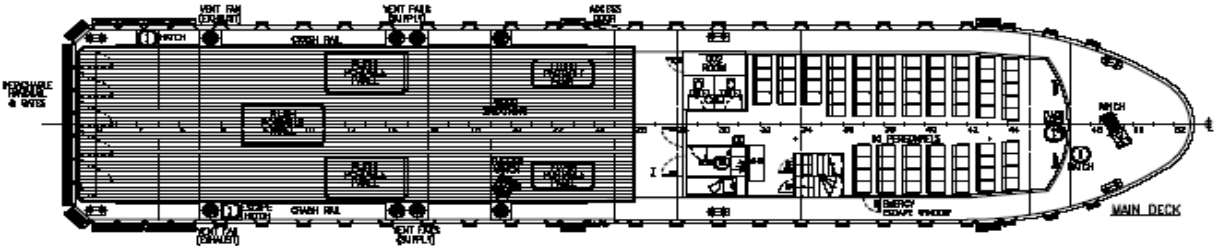
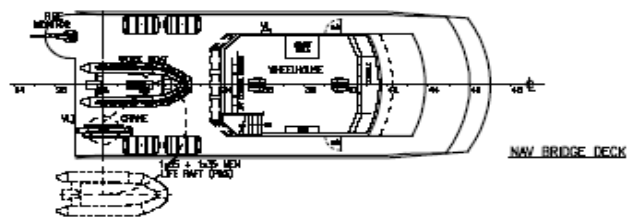
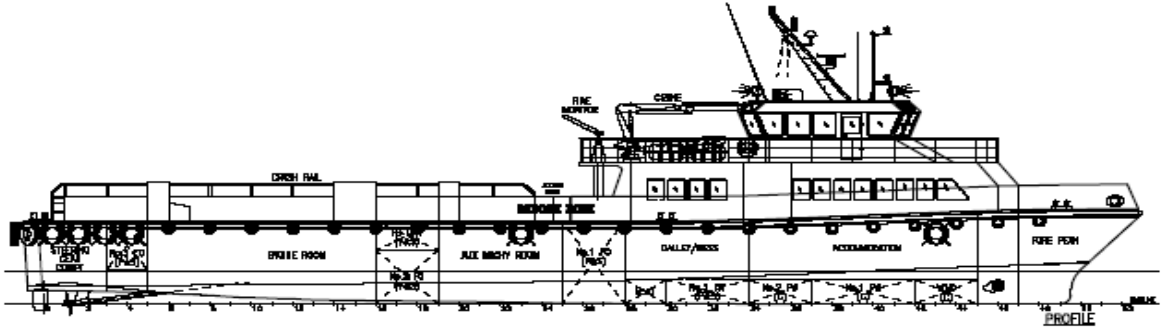
Quantity : 6 nos.
Power Supply : 415V/ 3 Phase/ 50 Hz
Shore Power : Yes
Connection

ACCOMMODATIONS

Seating : 80 Business Aircraft Seats
Crews : 8 men
Airconditioning : Water cooled
Galley : Domestic Style
Store : On deck
Toilets : 3 units for Passenger use
Entertainment : TV linked to CVC and DVD

SOLAS AND EMERGENCY RESPONSE

Life Raft : 4 units (65 men)
Lift Jackets : 100
Life Buoys : 6 units
Scrambling Nets : 2 units
Deck Spray Shield : Yes
Oil Dispersant Boom : Yes
Rescue Boat : Yes



Approved By :
On :

PRINCIPAL DIMENSIONS

- LENGTH OVERALL40.327 m
- LENGTH WATERLINE.....38.029 m
- BREADTH MOULDED..... 7.80 m
- DEPTH MOULDED 3.40 m
- DESIGN DRAFT (MLD)..... 1.30 m
- PERSONNEL 80
- ABS ●A1 ●AMS HSC UTILITY CREWBOAT

Rev	History/Trace	By	Date
SAM ALUMINIUM ENGINEERING PTE LTD 27-A Wangsat Road #12-01, #12-02 Singapore 010101 Tel: 6392 8884 Fax: 6392 2033 E-mail: sam@samaluminium.com.sg			
Drawn	ABD	Checked	1:125
Project	SASASHIP 2007.2.02	Approved	SUK
Item	40m UTILITY CREWBOAT	Checked	TUMY 98ET
Sheet	GENERAL ARRANGEMENT	Drawing No	POB40-C1
		Scale	0

