

5000 BHP Platform Supply Vessel, DPS-2, FiFi 1

PRINCIPAL PARTICULARS

Year Built	March/May 2010
Builder	China Shipyard
Call Sign	3F
Official No.	
Class	ABS+A1 (E) Offshore Support Vessel, Fire Fighting Class 1 + AMS + DPS 2
Flag	Panama
GRT / NRT	2300/700

DIMENSIONS

Length Overall	70.00m
Length WL	66.46m
Length between perpendiculars	61.60m
Breadth Moulded	16.80m
Depth Moulded	7.50m
Draft	6.30m
Freeboard	1.3m

MACHINERY

Main Engines	2 x 2500 BHP (1864 Kw) Niigata 6L28HX
Propellers	2 x Fixed Pitch Well Mounted 360° Azimuths Niigata
Bow Thruster	2 x CPP Tunnel Thrusters, Approx. 7T Thrust each 1 x 575 kw/1x 610 Kw - Brunvoll
Generator	3 x 800kw /1x 280kw/ 415V /3 ph/50 Hz diesel driven Cummins KTA 38-D(M1) & KTA 19-D(M1)
Emergency Generator	1 x 86kw/415V/ 50Hz diesel driven Cummins 6BTS.9-D(M)

SPEED

Max. Speed	12.0kts
Type of Fuel	Marine Gas Oil
Consumption	Abt 10mt/24 hrs @ 100% MCR

CAPACITIES

Fuel Oil	1310 cbm
Fresh Water	400 cbm
Water Ballast/Drill Water	520 cbm
Liquid Mud	460 cbm
Bulk Cement	192 cbm
Brine/Ballast	155 cbm
Lub Oil	10 cbm
Dispersant	20 cbm
Foam	20 cbm
Deck Cargo	700 mt
Deck Area	600 sqm
Deck Strength	5t/sqm
Deadweight	2750 @ 6.3m draught
Freezer	To store provisions for a period of 28 Days
Cooler	To store provisions for a period of 28 Days

DISCHARGE CAPACITIES

Fuel Oil	1 x 200 cbm/hr @ 90m head
Fresh Water	1 x 150 cbm/hr @ 90m head
Drill Water	1 x 200 cbm/hr @ 90m head
Liquid Mud	2 x 75 cbm/hr @ 90m head
Bulk Cement	2 x 30 cbm/min @ 80 psi

DECK & AUX. EQUIPMENT

Anchor	2 x 2500kgs Stockless Bower or 1980 Kgs HHP Anchor
Chain	Total length 467.5m x 46mm U2 stud link chains
Anchor Windlass	1 x electro hydraulic with 2 cable lifter and 2 warping heads
Winch Rating	13mt @ 18m/min for 46mm dia chains
Capstan	2 x 10mt @ 25m/min electro hydraulic
Tugger Winch	2 x 10 T Electro Hydraulic
Deck Crane	Load S.W.L. : 2.2 T/Boom Length : 12.2 m

ACCOMMODATION

One Man Cabins	4 cabins
Two Man Cabins	5 cabins
Four Man Cabins	3 cabins
Total	26 berths
1 x Hospital with 1 bed	
Fully Air Conditioned.	

RADIO & NAVIGATION EQUIPMENT

GMDSS	: Area 3
Rack Console System	comprising
1 x Inmarsat C	with EGC
1 x MF/HF-D	SC Radio Telephone
2 x VHF-DSC	Radio Telephone
1 x SSB	Radio
1 x EPIRB	
1 x Navtex	Receiver
3 x VHF	Portable radios
1x 96nm X-band	Radar(ARPA) /1x 96nm S-band Radar
1 x GPS	Plotter
1 x Magnetic	Compass
1 x Gyro	Compass
1 x Autopilot	
1 x Weather	Fax Receiver
1 x Doppler	Speed Log
1 x Echo	Sounder
1 x PA/Talkback	System
1 x Anemometer	
1 x Auto	Telephone system
1 x TV and	Radio system
1 x Aneroid	Barometer
1 x Chronometer	
1 x Inclinator	
1 x Joystick	Control
DP System	Kongsberg C Pos DPS-2
Refrance	Systems DGPS - Fanbeam
Option for	HiPAP

FIRE FIGHTING & LSA EQUIPMENTS

External FiFi	: 2 x 1500 cbm/hr @ 14 bar / 140 mlc / 1800 rpm
Pump	: 2 x 1200 cbm/hr @ 12 bar (with remote control) throw height 45m from sea level
Monitors	One monitor fitted with double barrel for foam discharge
Emergency Fire pump	35 cbm/hr @ 50m head
1 x Water Spray	Curtain round th : Seaplus, South Korea
Engine room	water spray system
Foam/Dispersant	System with 15cbm tank and foam monitor

Fire Extinguishing System

Engine Room	CO2 system
12 x fire	hydrants and fire extinguishers as Class requirements
4 x fireman	oufits
2 x fire	blankets for engine room and galley
1 x BA	recharging compressor of 75 ltr/min @ 200 bar

Life Saving

2 x 30 men	Inflatable Liferrafts
8 x Lifebuoys	
Lifejackets	as per SOLAS requirement
1 x Line	Throwing Apparatus
12 x Parachute	Distress Signals
2 x Orange	Smoke Signals
1 x First	Aid Kit
1 x Diesel	Powered Rescue Boat for 6 persons
3 x 1000W	floodlights
2 x 2000W	searchlights
1 x daylight	signaling light
1 x airhorn	

AUXILIARY EQUIPMENT

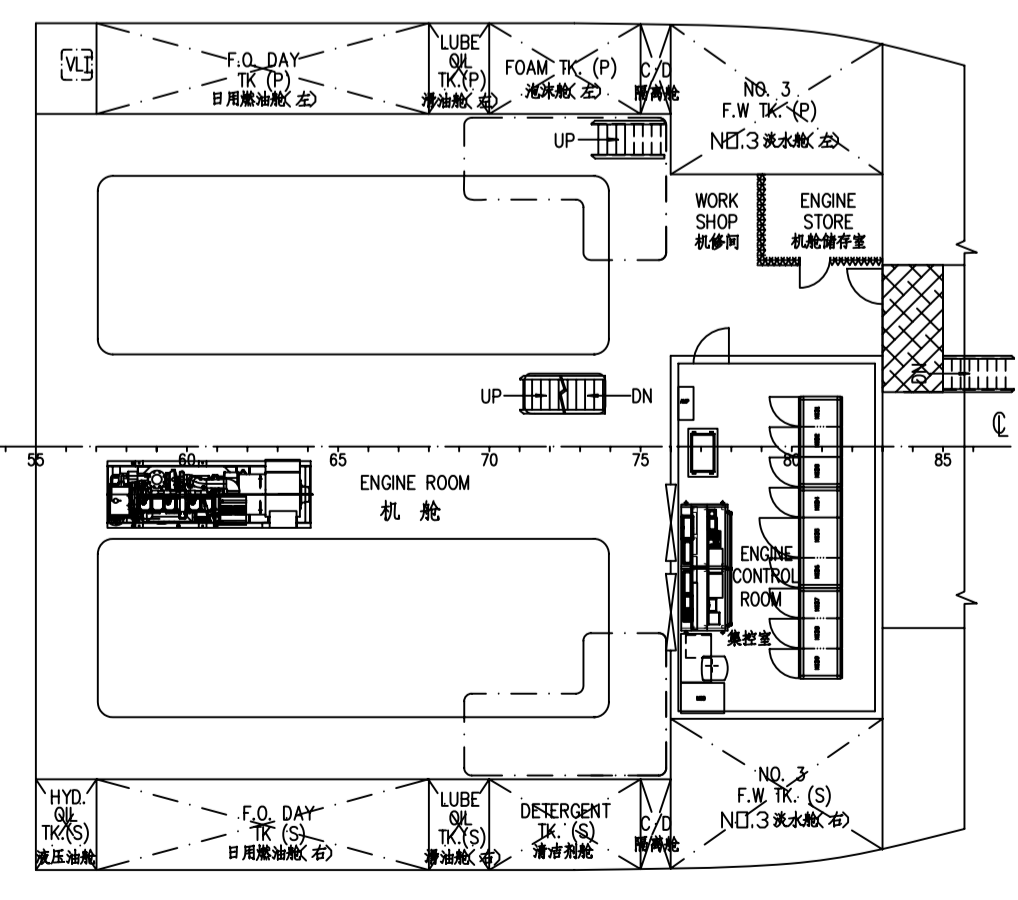
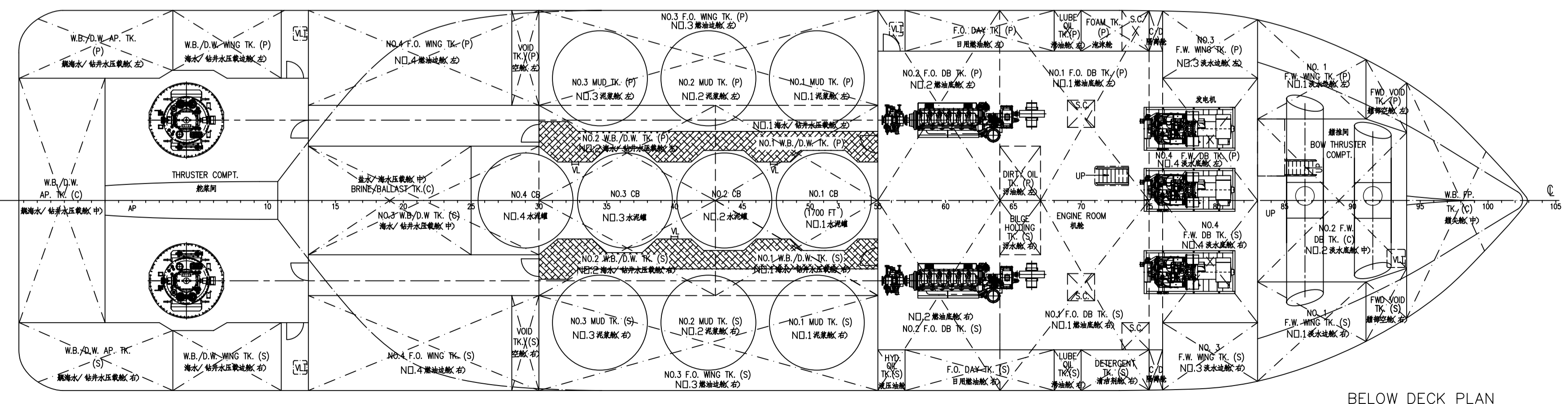
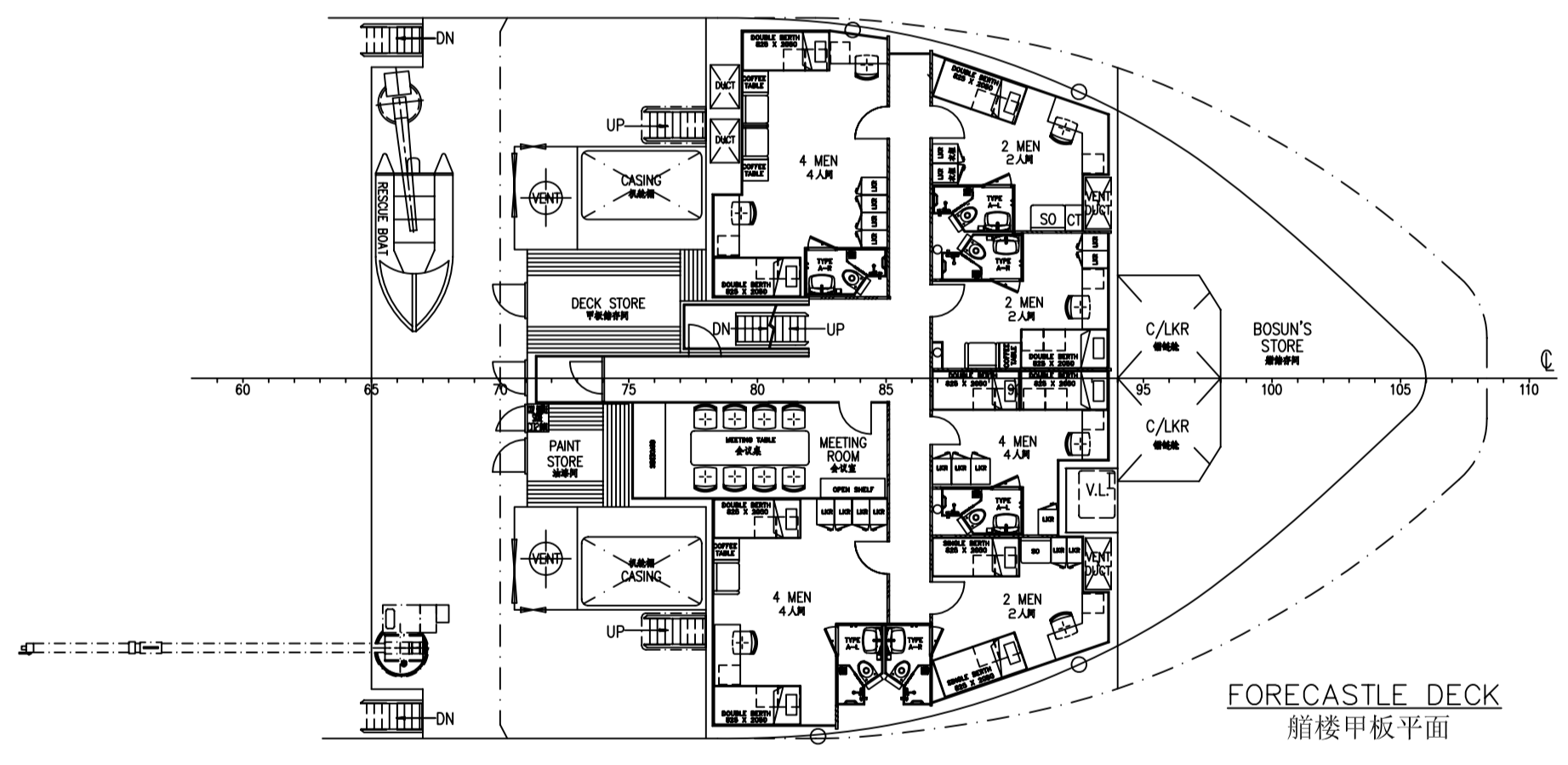
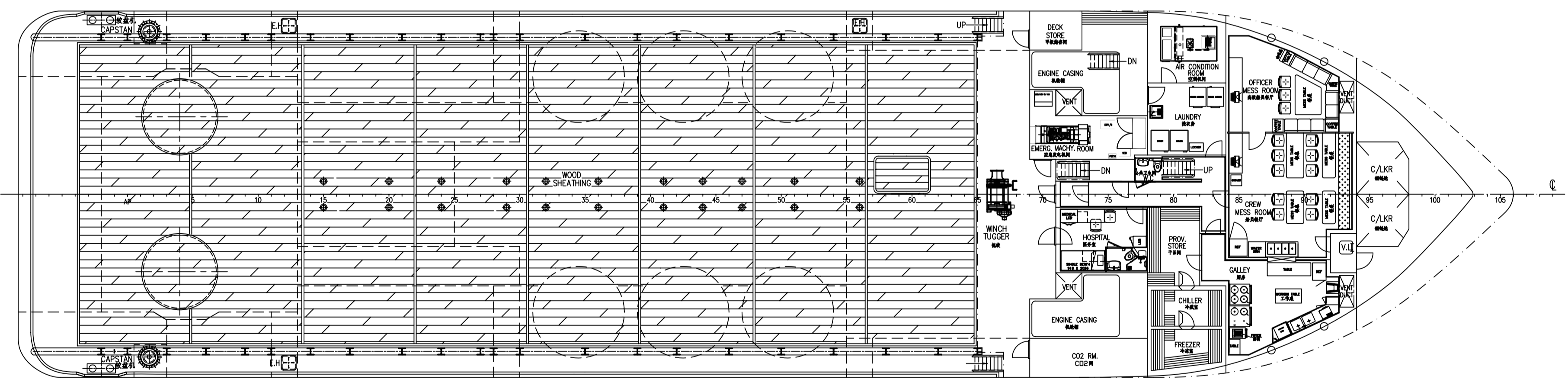
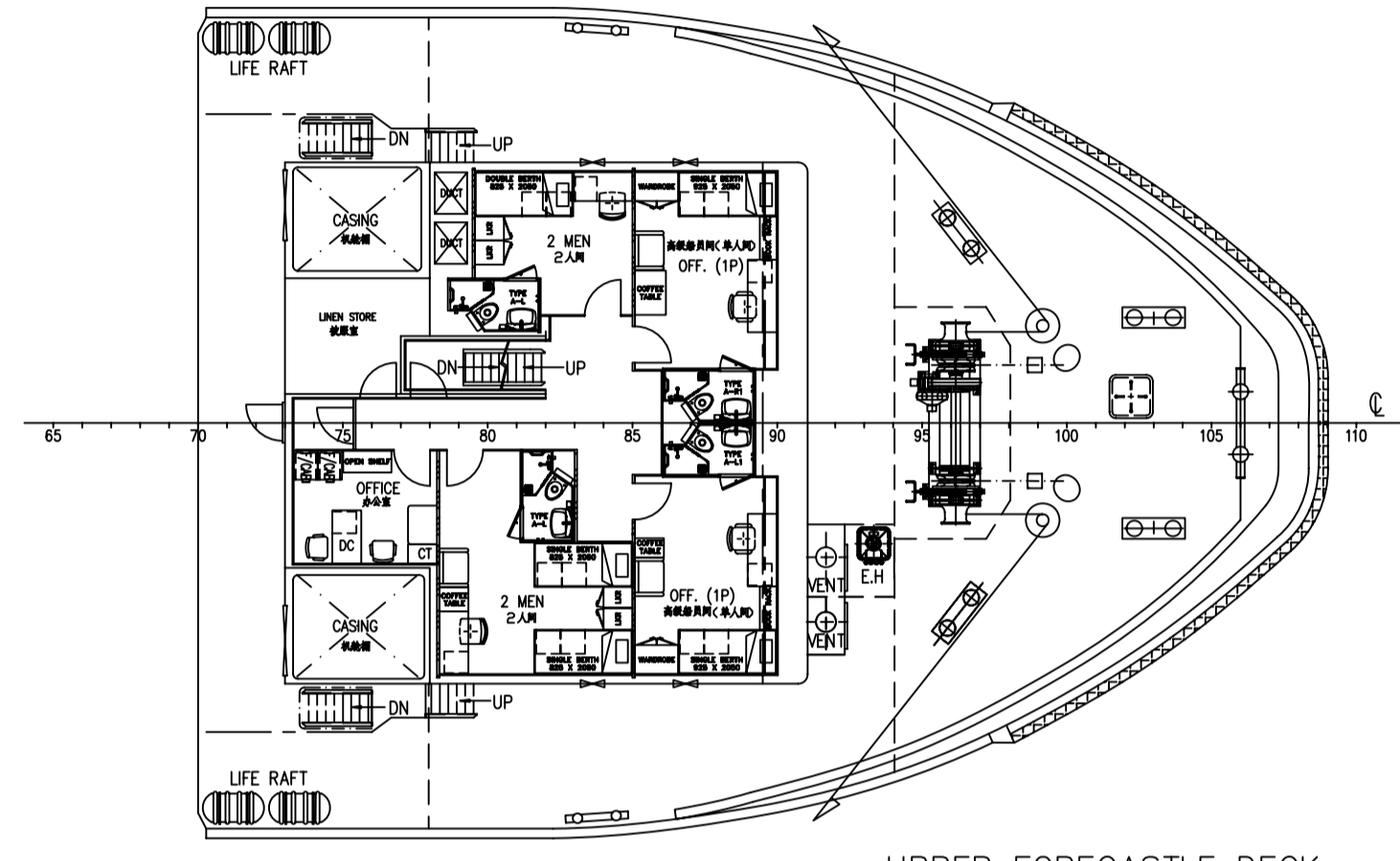
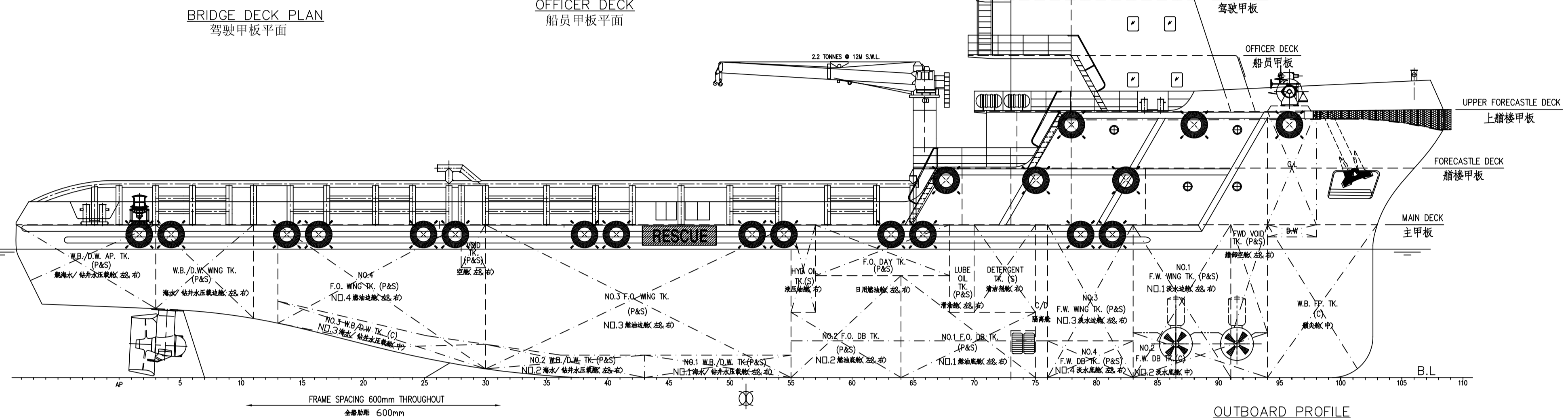
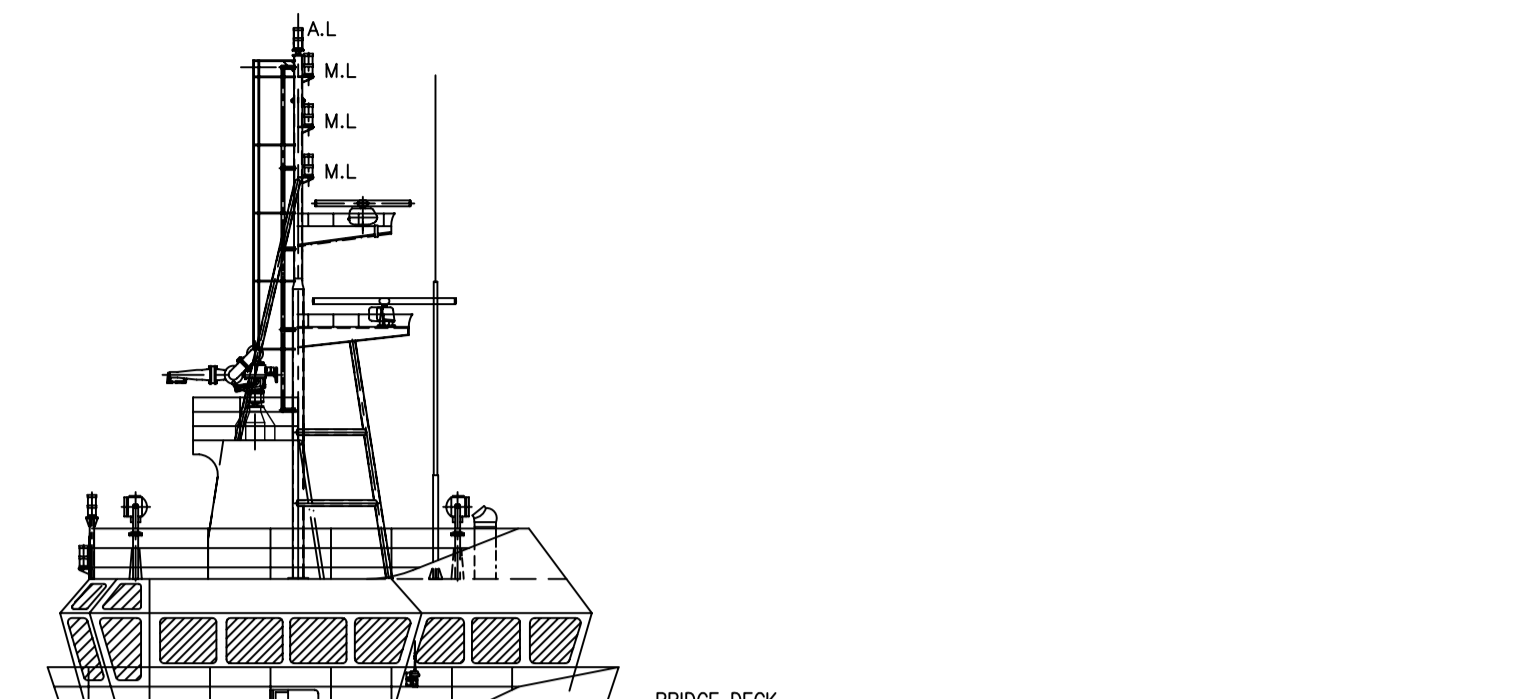
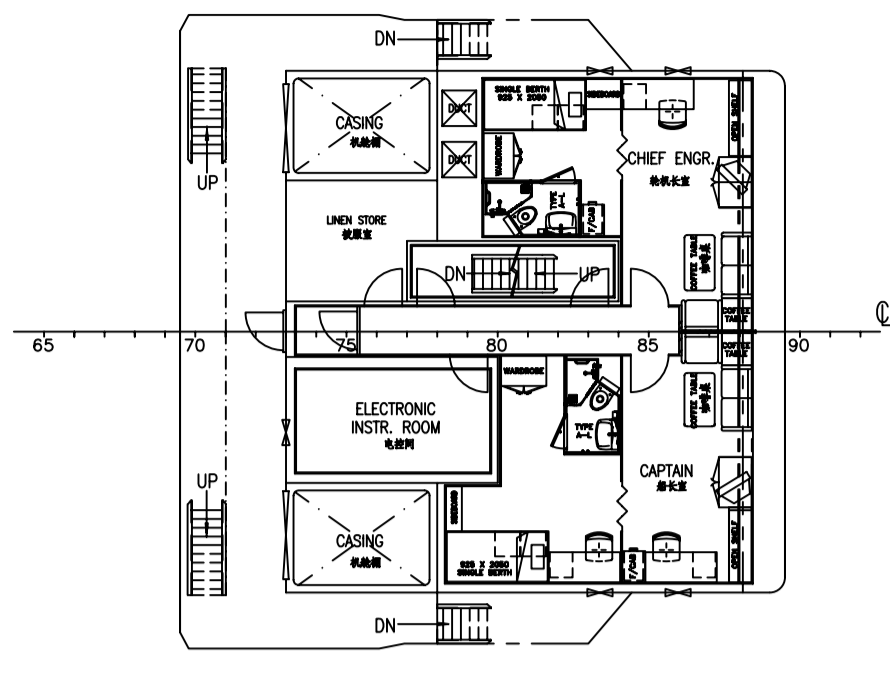
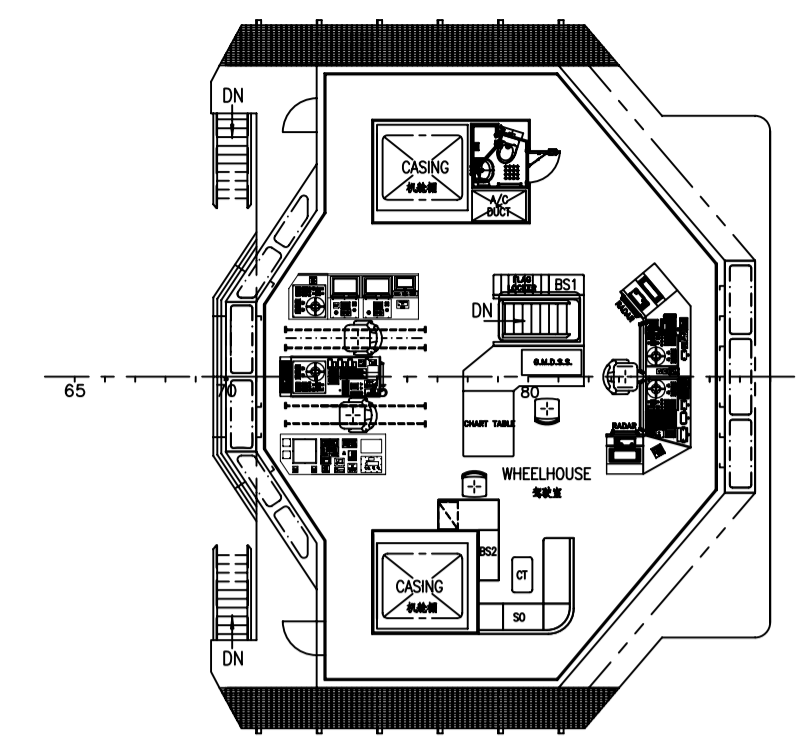
1 x Sewage	Treatment Plant suitable for 40 men
1 x 5T/day	Fresh Water Maker,
1 x Air	Compressor
1 x Oily	Bilge Water Separator,
capacity 1.0	cbm/hr with oil content less than 15 ppm

图号: V10-001-8819MM
 船名: MW618B-100-01A
 设计: 航海部
 审核: 航海部
 批准: 航海部
 日期: 2010.10.11

V10-001-8819MM

PRINCIPAL DIMENSIONS
 主尺度

总长	LENGTH (O.A.)	70.000 m
设计水线长	LENGTH (W.L.)	66.460 m
两柱间长	LENGTH (B.P.)	61.600 m
型宽	BEAM (MLD.)	16.800 m
型深	DEPTH (MLD.)	7.500 m
设计吃水	DESIGN DRAFT	6.300 m
载重量	TOTAL DWT	2750 TONS
燃油	FUEL OIL	1300 m ³
淡水	FRESH WATER	400 m ³
钻井水/压载水	DRILL WATER / W.B.	520 m ³
泥	MUD	460 m ³
盐/压载水	BRINE/BALLAST TK.(C)	155 m ³
甲板净面积	CLEAR DECK AREA	600 m ²
甲板载重	DECK CARGO (DECK LOADING = 5.0t/m ²)	700 tons
干货舱容积	DRY BULK TANKS (4x1700 ft ³ =6800 ft ³)	192 m ³
主机	MAIN PROPULSION ENGINE	2 X 2500 ps
试航航速	SPEED (TRIALS)	12.0 knots
定员	COMPLEMENT	26 men
船级	CLASS & NOTATION : ABS + A1 @ "OFFSHORE SUPPORT VESSEL, FIRE FIGHTING VESSEL CLASS 1" + AMS + DPS-2	



说明: 1. 本图基于VMW618-2/3设计, 除了船体动力定位系统由DP1升级为DP2, 驾驶室等重新布置。
 The drawing is based on VMW618-2/3 design, except DP system for the vessel to be changed from DP 1 to DP 2, wheelhouse etc. rearranged.
 2. 本图适用VMW618-10/11船。
 The drawing to be valid for VMW618-10/11 vessels.

ITEM		DETAILS OF MODIFICATION		BY		DATE	
CONSULTANT							
 KHIAM CHUAN MARINE PTE LTD 15, HILLVIEW TERRACE, SINGAPORE 669226 TEL: 67753383 (6 LINES) FAX: 67753788 EMAIL: khiamchuan@kcm.com.sg							
PROJECT							
70M PLATFORM SUPPLY VESSEL							
TITLE							
GENERAL ARRANGEMENT							
CLASSIFICATION		SCALE		HULL NO.		DRAWING NUMBER	
DRAWN		CHECKED		25-1-06		25-1-06	
hcKOH		1:150		KCM/Q479(A)-G1		REV. 3	
70m 平台供应船				详细设计			
PLATFORM SUPPLY VESSEL				DETAIL DESIGN			
总布置图				DWG:			
GENERAL ARRANGEMENT				MW618B-100-01A			
标记		修改		签字		日期	
MARK		MODIFICATION		SIGNATURE		DATE	
QTY		SHEET No.		DATE		DATE	
设计		CAD		审核		会签	
校核		会签		日期		日期	
审核		日期		日期		日期	
标注		日期		日期		日期	
审定		日期		日期		日期	
材料:				MATERIAL:			
This drawing and the information contained is the exclusive property of Fujian Mawei Shipbuilding Ltd and must not be copied or handed over to third parties without our written permission. 本图(文件)及所含内容的知识产权属于福建马尾造船股份有限公司, 未经本公司书面许可, 任何人不得复制或转交第三方。							