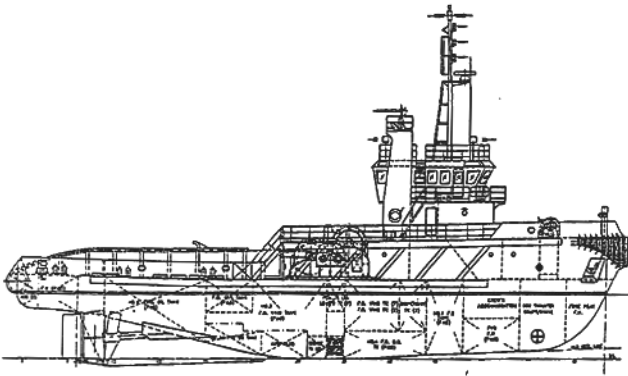


GENERAL INFORMATION		PRINCIPAL DIMENSION	
Vessel Name		Length Overall	40.00 Meters
Port of Registry	Singapore	Breadth Moulded	11.40 Meters
Year Built	2009	Depth Moulded	4.95 Meters
Class	Germanischer Lloyd	Draft Design	4.40 Meters
		GRT / NRT	495 / 149

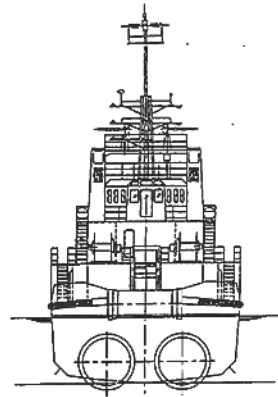
CAPACITY	
Fresh Water	80 Cubic Meters
Fuel Oil Capacity	450 Cubic Meters
Endurance	Approx. 23 Days
Main Engine & Gearbox	2 x Yanmar 6EY26 Diesel Engines Producing 1,920 Kilowatts each @ 750 Rpm c/w 2 x Yanmar YXH 2500C Reverse Reduction Gearboxes of 3.03 : 1 Ratio
Bollard Pull	Approx. 65 Tons
Speed	Approx. 12 Knots
Clear Deck Space	10.5 m x 8.5 m

AUXILIARIES & DECK EQUIPMENTS	
Generators	3 x Cummins Diesel Engines Model: NTA855-G2 coupled with 250 KW Stamford Alternator Model: HCM434F - 415V/3Ph/50Hz
Propulsion	Twin Kaplan Propeller With Fixed Kort Nozzle
Bow Thruster	HRP 3001TT/220KW – 3.75 Tonnes Thrust
Control Station	Bridge FWD & AFT Control
Towing/Anchor Winch	Waterfall Double Drum Hydraulic Winch with Local Control & Remote Control in Wheelhouse, 150 Tonnes Brake Holding Capacity, 75 Metric Tonnes Line Pull @ 15 M/min, 2 x Drum Capacity 1000 M x 52 mm Wire
Tugger Winch	2 x 10 Tonnes Single Drum Hydraulic Winch Line Pull @ 15 M per minute with Local Control
Capstan	1 x 10 Tonnes Hydraulic Capstan Line Pull @ 10M per minute with Local Control
Towing Pins & Sharkjaws	Combined 100Tonnes Hydraulic Tow Pins / Sharkjaws
Firefighting	Fire Pump Coupled To Independent Diesel Engine of capacity 1,200m3/hr @ 10 Bar Two Fixed Fire Monitors 10,000 litres/min @ 80 Meters
Communication Equipment	GMDSS (Area 3) / Radar / GPS / Echo Sounder / Speed Log / Navtex / Weather Fax / SART / EPIRB
Accommodation	Fully Air-Conditioned with total of 14 Berth Cabins 1 x 2 Berths Cabins, 2 x 2 Berths Cabins, 4 x 2 Berths Cabins

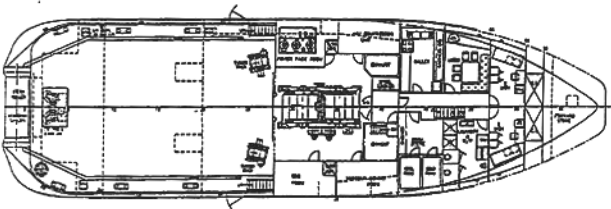
## General Arrangements



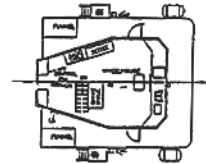
Profile



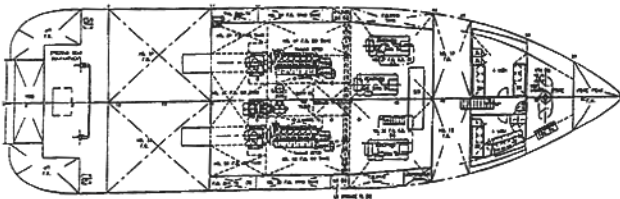
Stern View



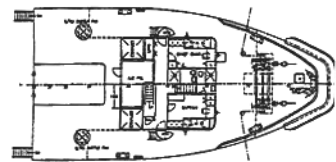
Main Deck



Wheelhouse Deck



Below Main Deck



Forecastle Deck