

Particular of 2942kw ZPP & fire fighting harbor tug

A. Specialist of 2942kw tug

This tug was designed and built due to CCS standard and newest rules and regulations .The tug is consist of two marine diesel engines (2000ps *2) which drives two circular ZPP equipment, whose function is to work near the port as tug and fire fighting as well. She can not only sail at great coastal with good stability and easy operation ,but also do drawing or pushing work at coastal .Her endurance is not less than 1000 sea miles when sailing with full draft ,at the same time ,the speed will never less than 13.5knots .Her forward drawing power is not less than 52 tons and backward not less than 46tons .This tug can do fire fighting work at harbor .main fire equipment 1200m³/h , 120m ,deputy one is 300m³/h with 70m ,water spring system is 300m³/h .

B、 main diamention of 2942kw tug :

L O A :	36.20M
L B P :	31.50M
BEAM :	10.0M
DEPTH :	4.40M
FULL DRAFT :	3.4M



HARBOUR TUG

基本要素 Principal Particulars			机械设备 Machinery Quipment		
船 级	Classification	CCS	柴油主机	Disel Main Engine	Niigata 2×1471KW×750rpm
航 区	Trading Limitation	Offshore mob./Coastal/work	舵浆装置	Propeller Unit	Niigata 2×ZP-31
建造地	Where Built	C h i n a	发 电 机	Generator	6135jcaf 2×100KW×1500rpm
建造年份	Year Built	2008 年	船锚缆机	Fore/ anchor/Towing Winch	Plimsoll hydraulic windlass/winch
船 籍 港	Port of Registry	中 国 C h i n a	艙拖缆机	Aft. Towing Winch	Plimsoll hydraulic mooring winch
总 长	L.O.A	36.80M	锚	Anchor	China 2×660kg
垂线间长	L.B.P	32.30M	主配电板	Main Switchboard	China AC400/3P
型 宽	Breadth Molded	10.00M	投影磁罗经	Projecting Compass	Japan MR-165C
型 深	Depth Molded	4.60M	雷 达	Radar	Japan JMA-5106
吃 水	Draft	3.60M	测 深 仪	Echo Sounder	Japan FF-50
满载排水量	F/I Displacement		卫星定位仪	GPS Receiver	Japan GPS-112
空载排水量	Light Displacement		甚高频无线电	VHF Radio Tel.	Japan JHS-32B
总 吨 位	Gross Tonnage	432	中高频无线电	MHF Radio Tel.	Japan JSB-196GM
净 吨	Net Tonnage	129	双向无线电	Two-way Radio Tel.	Japan SR-102
最大航速	Max.Speed	13.5kn	雷达应答器	Sart	Japan JQX-30A
系柱拖力	Bollard Pull	52.0T	应急无线电示位标	EPIRB	Japan JQE-3A
续 航 力	Range	2000n.miles	航行警告接收机	NAVTEX	Japan NCR-330
床 位	Accommodation	13	对 讲 机	WALKIE-TALKIE	IC-M32
燃 油	Fuel Oil	124mt	INMARSAT 船舶地面站		JUE-33
淡 水	Fresh Water	48.1mt	对外消防系统	External FI-FI	Aker Kvaerner Subsea
压 载 水	Ballast	15mt	对外消防泵	FI-FI pump	Cap.1500Cu.m/hr fire pump
主机燃油消耗率	M.E.S.F.Consumption	197g/kW-hr			Cap.1200 Cu.m/hr Water/foam
					Cap.300 Cu.m/hr Water Curtain

MPR-2MARINE COLD EQUIPMENT COLD ROOM 11M3 ICE ROOM 7M3

C、Machinery specification

1. main diesel engine

type : middle speed diesel engine

model : NIIGATA 6L26HLX

quantity : 2 sets

rate : 1471KW

rotary : 750rpm

propeller system and shaft

:

:

-

2. The propeller system is consist of circular 360° ZPP controlled & operated on the bridge, each system is consist of a propeller ,hydraulic steer gear , gear box , middle shaft and coupling . The propeller is made of bronze with four leaves .

model: NIIGATA ZP-31

quantity: 2sets

rate: 1471KW/750rpm

circular time : 10s /180°

ZPP steer gear propeller

Gear box :

Type : hydraulic type which installed inside of propeller

Diesel generators

There are two same A/C generators , each of them can meet the whole tug work enquiry

3. diesel generators :

four stocks straight type 、 fresh water cooling system 、 spring straight

model : 6135JZCaf

rate : 100kW

quantity : 2 sets

rotary : 1500rpm

stocks : 4

AC GENERATORS :

MODEL : UC274E

POWER : 100kW 380V 50HZ

:

:

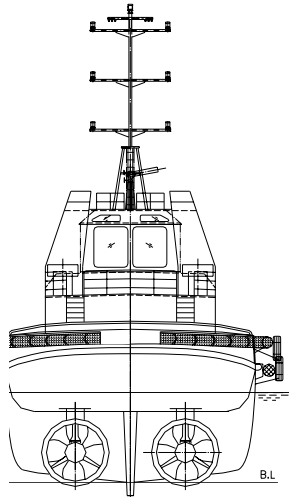
4. FIRE FIGHTING SYSTEM

This system is droved by left main engine which works with gear box to start fire system. the left main engine 's propeller will be off when working .At the same time the right main engine will control the direction and position .This system can meet the fire enquiry at the harbor and coastal area tug work .

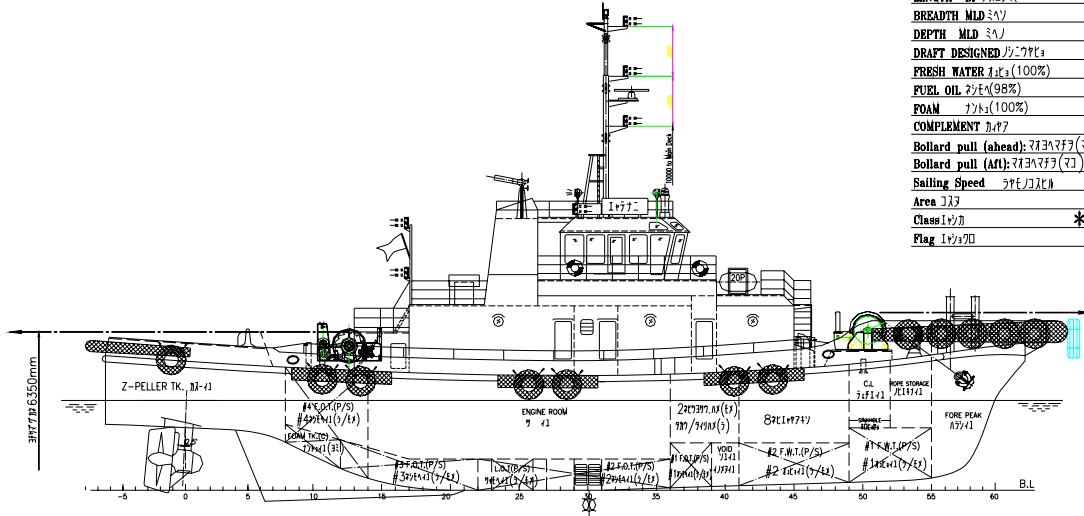
Displacement	1500m ³ /h
Far	140m
Rotary	1800rpm
Shaft input power	770kw

5. 其它主要设备:

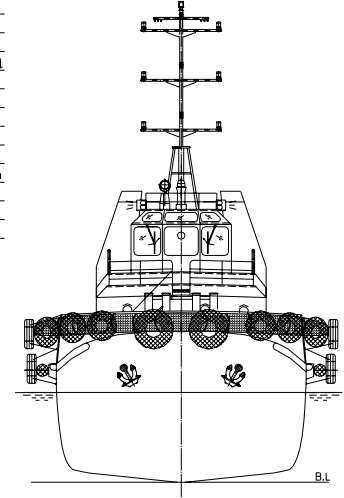
项 目	型 式	数 量	型 号	排 量 × 压 力	电 机 功 率
Central air condition	Cool	1	MPC-3	4000 m ³ /h	
Cooling system		1	MPR-2	2000kcal/h	
Standby L.O pump	电动齿轮泵	1	DH-M100	40m ³ /h × 20m	15kW
STANDBY F.W pump	电动离心泵	1	SAHH-M100	50 m ³ /h × 20m	5.5kW
Bilge ballast pump	电动离心泵	1	65CWZ-8	36 m ³ /h × 30m	5.5 kW
Fire water pump	电动离心泵	1	65CWZ-6	36 m ³ /h × 42m	11kW
F.W pump for life	电动漩涡泵	2	1WZ-0.9	1 m ³ /h × 40m	1.5 kW
Oil transport pump	电动齿轮泵	2	2cy 5/0.33	5 m ³ /h × 0.33 MPa	
Oil water seperater			ZYFM(NJ)-0.25		
Engine room fan	电动轴流式	2	CZ-75A	18000 m ³ /h	4 kW
Steer gear fan	电动轴流式	2	CZ-35A	3000 m ³ /h	1.1 kW
Air compressor	立式、二级压缩	2	WP18L	18 m ³ /h	5.5 kW
Seawage system	生化法处理式	1	WCH-0.5	0.5 m ³	0.18 kW



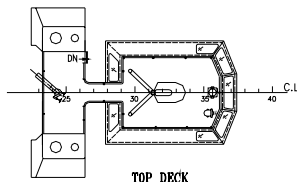
STERN VIEW
シ 後



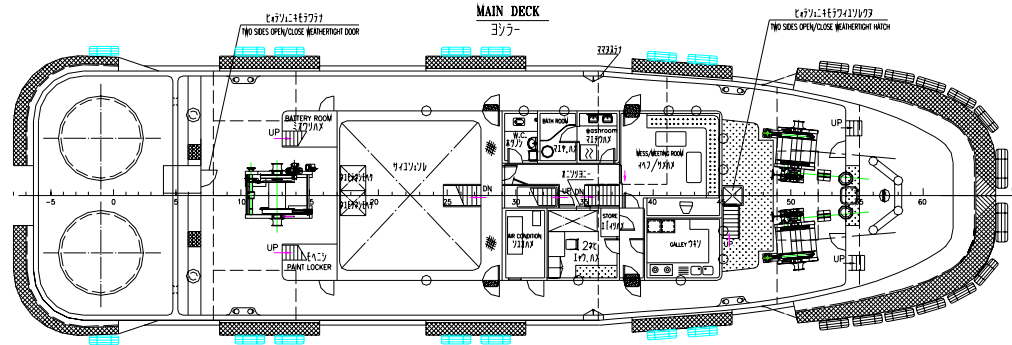
LENGTH O.A. (シ)	38.80 m
LENGTH W.L. (シ)	35.50 m
LENGTH BP (シ)	32.30 m
BREADTH MLD (シ)	10.00 m
DEPTH MLD (シ)	4.60 m
DRAFT DESIGNED (シ)	3.60 m
FRESH WATER (100%)	48.1 t
FUEL OIL (98%)	124 t
FOAM (100%)	11.05 t
COMPLEMENT (人)	13 P
Bollard pull (ahead) (シ)	>82 t
Bollard pull (Aft) (シ)	>46 t
Sailing Speed (ノット)	≥13.5Kn
Area (シ)	17777
Class (シ)	*CSA *CSM, Tug, RI
Flag (シ)	シ



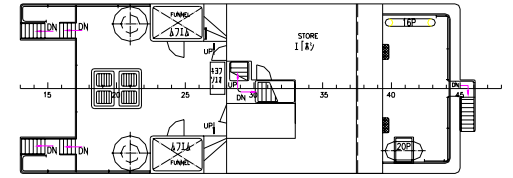
FRONT VIEW
シ 前



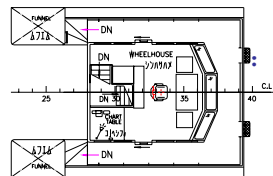
TOP DECK
シ 上



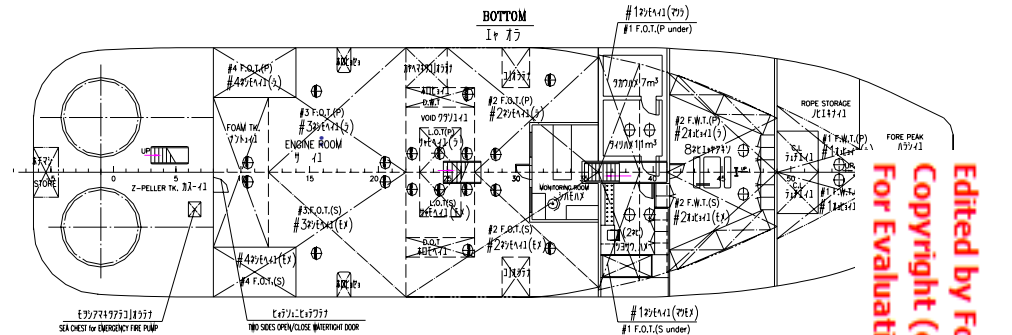
MAIN DECK
シ 中



BRIDGE DECK
シ 橋



WHEELHOUSE DECK
シ 橋上



BOTTOM
シ 底

Edited by Fo
Copyright (c)
For Evaluation

7/7	REV. 01	2014-01	NAME	DATE	2942W
7/7	DESIGNED	7/7	REV. 01	NAME	DATE
7/7	INDEX	30	7/7	7/7	7/7



WEBSITE: www.globalchimaks.com

:

:

-

Edited by Fo
Copyright (c)
For Evaluation